

Historic, archived document

Do not assume content reflects current scientific knowledge, policies, or practices.



Ind. 12/5, 95. W.D.T. - 0

VICK'S

Season of 1895.

ANNALS, APR 95

Handwritten notes and signatures

ILLUSTRATED
CATALOGUE OF

CHOICE SEED POTATOES

GROWN EXPRESSLY FOR SEED, BY

E. H. VICK,

ROCHESTER, - - - NEW YORK.

The Growing and Introducing NEW VARIETIES OF POTATOES IS MY
SPECIAL FEATURE.

NEW SEEDLING POTATO.--VICK'S ABUNDANCE.



A Sterling Novelty. Beautiful in form and immensely productive. Superior in every respect to American Wonder.

A Word to My Customers.

A special feature with me is the growing and introducing of **New** and **Choice** varieties of **Seed Potatoes**. Before offering a new variety to the public it is thoroughly tested, and must have distinct and valuable characteristics which are superior to any other variety of its class, such as vigorous growth, abundant yielding qualities, resistance against blight and drought, cooking qualities of the highest order, and in fact every feature which tends to make a strictly first-class potato.

In describing a variety you will observe there is no mention made in regard to the immense number of bushels (hundreds or thousands) these new varieties will yield to the acre, nor do I deem it policy to do so, for it would only create disappointment and dissatisfaction with my customers.

New varieties of potatoes, as a rule, are purchased in small quantities, planted in the choicest spot in the garden, given highest possible culture, with the result of yielding a crop which is **at the rate** of 600 to 1000 or possibly more bushels to the acre. (Twenty-four hills of Harvest Queen grown by Lorenzo Osborne, Albion, N. Y., in 1893, yielded at the rate of about twenty-two hundred bushels to the acre.)

All my tests are made in ordinary field culture, planted in drills as follows: Early and medium varieties, 1 ft. x 3 ft. Late varieties, 15 in. x 3 ft. I believe the best results can be obtained by planting in this manner, with seed cut two eyes to the piece.

I am always glad to receive reports from my customers in regard to their success in growing new varieties of potatoes. Kindly bear this in mind and favor me with a few lines stating the result of your efforts.

Thanking you for past favors and soliciting a share of your patronage in the future, I am

Respectfully yours,

E. H. VICK.

NOVELTIES AND SPECIALTIES.



Vick's Early Excelsior.—Extra Early. (*New.*)

This handsome and **extremely valuable** New Potato originated with an amateur grower in this vicinity. My attention was first called to its valuable characteristics in 1893. After visiting the field several times I became fully convinced that this variety had superior merit and great value as an **Extra Early Potato**. I at once secured the entire crop, which, by the way, was only a small one.

During the season of 1894 my good impressions have been fully confirmed, as Early Excelsior passed through one of the most severe droughts known to this vicinity, and produced an immense crop of large, handsome, well formed tubers.

In form and color it closely resembles its parent, the Early Rose, but it is much earlier, being quite **as early** as Early Pride, is **more productive**, and equal in quality.

For home use Early Excelsior is one of the best all-the-year-round potatoes ever introduced. It is good early, there is none better for winter use, and it fully retains its superior quality until the new crop comes again.

In cooking qualities this variety ranks high; in fact, there is no better; it is fine grained and floury either baked or boiled, and has a nutty flavor, which is a very marked feature.

In Early Excelsior I have a variety which will become fully as popular as Early Pride; is more productive and better adapted to general field culture. Give it a trial by all means.

Owing to my very limited stock, I can only offer this **grand** novelty in very small quantities at the following prices: Good size tubers, each 25c.; per lb. 50c.; 2 lbs. 80c.; 3 lbs. \$1.00; 5 lbs. \$1.50; charges prepaid. **Not more than 5 lbs. sent to one person.**

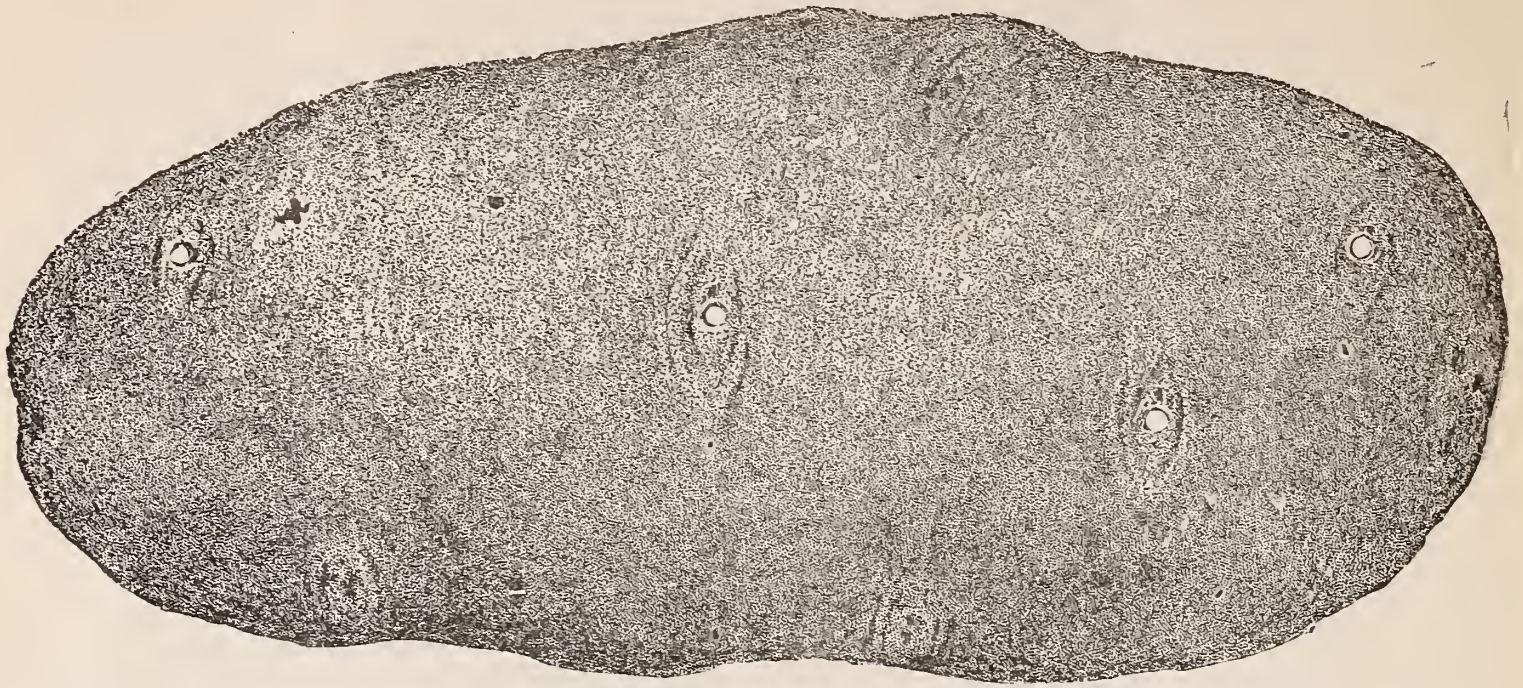
Vick's Abundance.—Late. (*New.*)

This superb variety is a cross between the Improved Peachblow and St. Patrick. It has been carefully and thoroughly tested and proven to be an **A No. 1 variety in every respect**. It has the strong growing and heaving yielding qualities of the Peachblow, which makes it almost absolutely **blight proof**, while the tubers are long and white like St. Patrick; very large, handsome in form and grow compactly in the hill. When cooked the flesh is fine grained, dry and floury, and of superior quality; this is the case when the tubers are first dug and a feature which is fully retained all through the winter and spring.

American Wonder has given general satisfaction and become very popular. It is a good variety; but **Vick's Abundance** is **far superior** to it, and I am confident will give better satisfaction and become more popular.

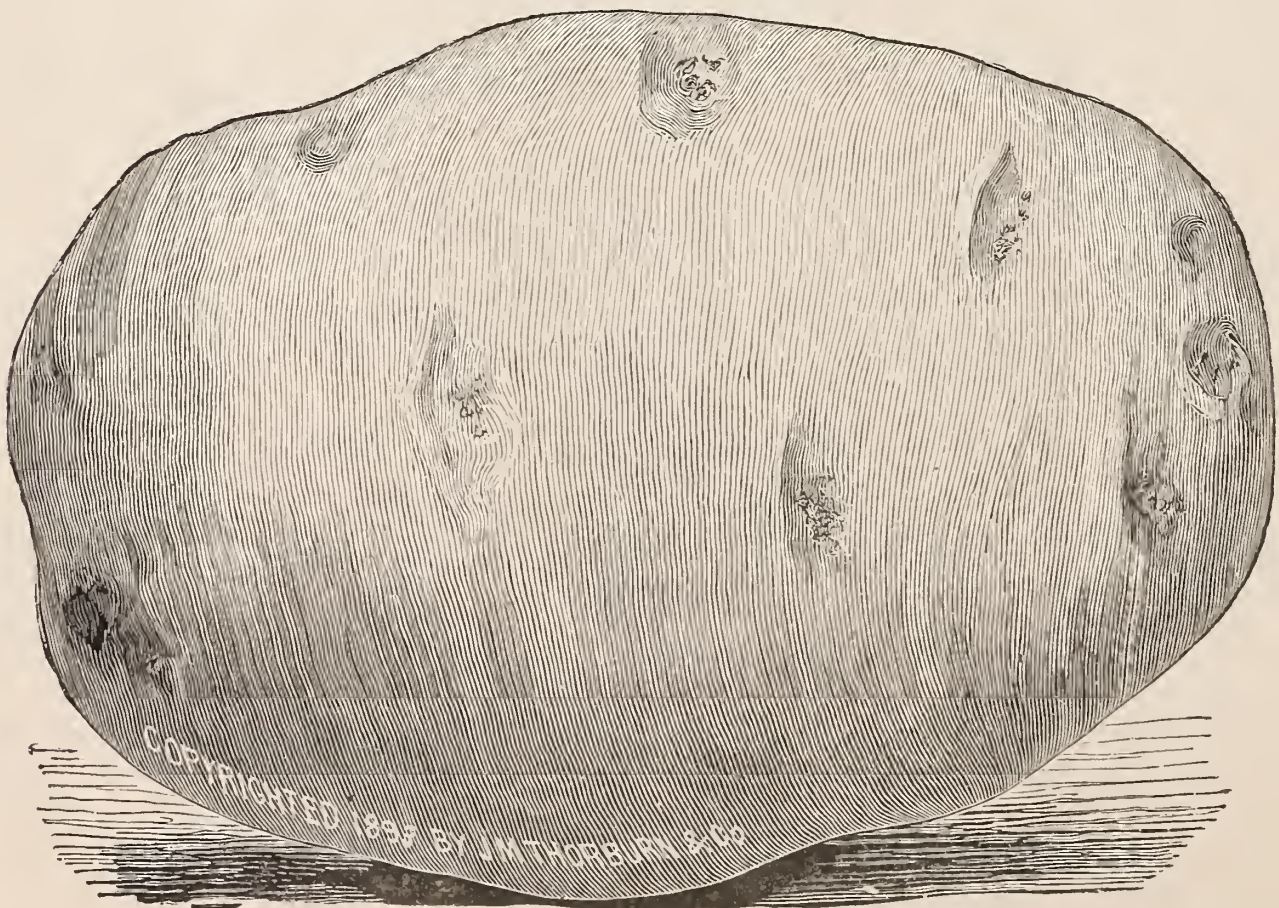
The many promising features of this variety commend themselves to every grower. Don't fail to get a start in this variety be it ever so small. Good size tubers, each 20c.; per lb. 40c.; 2 lbs. 70c.; 3 lbs. 90c.; 4 lbs. \$1.00; peck \$1.25; bushel \$4.00; bbl. \$10.00.

American Wonder.—Late.



This superb variety created a sensation such as has not been experienced since the introduction of the Early Rose. Wherever grown it has given unbounded satisfaction by resisting blight better than any other variety, and yielding immense crops of handsome tubers. It has the desirable shape and color which the market demands, and being an immense yielder, it not only **satisfies**, but **surprises the grower**, while in quality it excels all other white varieties. In habit of growth the vines are strong and branching, somewhat resembling that of the Peachblow; foliage of a rich, dark color, that is offset with a mass of beautiful white bloom, the floriferous habit of this variety being one of its marked and distinct features. The tubers are white, large and uniform in size; elongated, slightly compressed, with few eyes, which are nearly flush with the surface. In quality nothing can surpass this superb variety; either baked or boiled it is dry and floury, and has the rich, sweet flavor that is so marked in the Snowflake. In addition to its many other good qualities, I can strongly recommend it as being the nearest approach to a **blight and rot proof potato** ever offered. **Every farmer who consults his own interests will plant freely of the American Wonder.** Per lb. 30c.; 4 lbs. \$1; peck 50c.; bush. \$1.25; bbl. \$3.

Carman No. 1.—Medium Early. (New)



It is doubtful that any novelty ever created more sensation among potato growers than Carman No. 1. It was introduced last year at almost fabulous prices, yet the demand was many times in excess of the

supply, therefore those who wish to secure the Carman No. 1 this season had best place their orders early, in form the tubers somewhat resemble the Rural New Yorker No. 2, but the surface is not quite as smooth and even. Its table qualities are excellent, claimed by the disseminator to be without a peer. In my opinion Carman No. 1 has been over-estimated in regard to earliness. Per lb. 50c., 3 lbs. for \$1.25; peck \$2.50 bushel, \$7.00, barrel \$18.00.

Carman No. 3.—Late. (*New.*)

DISSEMINATOR'S DESCRIPTION: "Last year we had the honor to introduce the Carman No. 1 Potato being the second success of the experienced originator whose name it bears, in an attempt to obtain three **perfect** Potatoes—an Early, an Intermediate and a Late. The Carman No. 1 is the **early**, the Rural New Yorker No. 2, introduced in 1889, is the **intermediate**, and the **Carman No. 3**, which we now offer for the first time, is the **late** variety. Like the former two sorts, it is a seedling from seedlings raised through several generations, and it resembles them in shape, and also in having very few and very shallow eyes. It is of the shapeliest form, and even in drougthy seasons its perfect shape is retained. Without any approach to an exception, it is the **greatest yielder ever introduced!** It may fairly be claimed that it does not yield any small tubers at all in ordinary seasons. It bears its tubers very close to the plant, a single turn of the fork turning out every potato. It is of the **largest size**, the tubers usually **averaging in weight a pound each**; but on account of the very dry weather of the past season our present stock runs much smaller than it otherwise would. It is a perfect keeper; that is, it will not sprout up to planting time, unless kept in a warm place. Both skin and flesh are of extreme whiteness" Per lb. 60c ; 3 lbs. \$1.50; peck \$4.00. bushel, \$12.00; barrel \$30.00.

American Beauty.—Late.



This new variety is one of the strongest growing and most productive late sorts ever produced. The growth of top is **exceptionally strong** and branching, with large, glossy, dark green foliage. The tubers are very large, oblong in shape, somewhat flattened, **pure white** and well covered with a fine russeted coating. The flesh, when cooked, is of the purest snowy whiteness; fine grained, very mealy, and of superior quality that is unsurpassed by any potato in cultivation. The handsome form and splendid appearance of the tubers will make this variety a **general favorite** with all growers. This grand potato being a cross between Early "Snowflake" and the wonderfully productive and well-known variety Peerless, it will be readily observed that quality and productiveness are here combined.

Per lb. 30c.; 4 lbs. \$1.00; peck, 75c.; bushel, \$1.75; barrel, \$4.00.

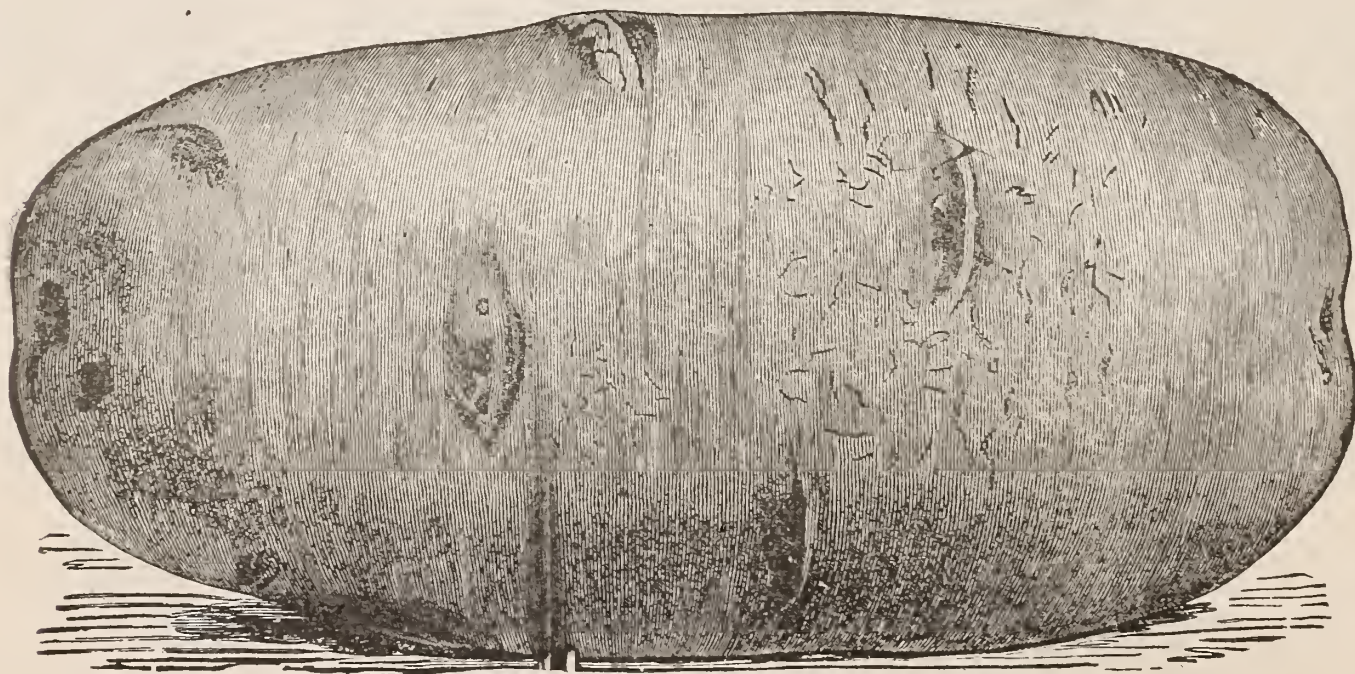
WRITE FOR SPECIAL QUOTATIONS ON 3, 5 AND 10 BARREL LOTS.

Maggie Murphy.—Late.



The name and wonderful productiveness of this new variety is making it very popular. The tubers are of a light pink or flesh color, very large and quite striking and handsome in appearance. The growth of top is exceptionally strong and vigorous, branches freely; resists blight to a remarkable degree; in fact, it may well be termed **blight proof**. Fabulous stories are told about this variety, such as a family of six persons making a meal from one potato. Those who have had the pleasure of seeing some of the immense tubers of Maggie Murphy will not doubt the above. Considering the immense size of the tubers the quality is splendid. Per lb. 30c; 4 lbs. \$1.00; peck 75c.; bushel \$1.75; bbl. \$4.00.

Vick's Early Advancer.



This excellent variety is from a seed-ball of the well-known and very productive variety, Late Hebron, fertilized with the pollen of the Early Ohio, and combines the **yielding qualities** of the former with the **earliness** of the Ohio. The tubers are large and uniform in size, shape elongated, slightly flattened, eyes few and but slightly depressed, skin white, with a tinge of pink around each eye. When cooked the flesh is the purest white, remarkably fine grained, and **unsurpassed in quality**.

This variety is two weeks earlier than the Early Rose, Vermont or Beauty of Hebron, and will give good satisfaction either for home use or early marketing. Per lb. 30c.; 4 lbs. \$1.00; peck 75c.; bushel \$1.75; barrel \$4.00.

Vick's Harvest Queen.



This superb variety originated in Vermont with one of our best potato growers, and is one that it would be impossible to recommend too highly. It is simply the perfection of the potato family, and is equally as desirable to the planter of a small garden patch as to the grower of a hundred acres. When yield and quality are the essential points, without regard to earliness, this variety will give as good satisfaction as any potato in cultivation. The tubers are large, round, somewhat oblong and slightly flattened, with few eyes; skin pure white, with a russeted coating, which is always indicative of excellent quality. When cooked the flesh is of a snowy whiteness, mealy and fine grained. Per lb. 30c.; 4 lbs. \$1.00, peck, 75 cents; bushel, \$1.75; barrel, \$4.00.

Vick's Early Pride.

Now the most popular Extra Early Potato.



This grand variety has fully maintained all that was claimed for it at the time of its introduction, and has all the qualities that are essential to make it one of the most valuable varieties ever introduced. It is a very strong grower; considering its earliness immensely productive; one of the very best keepers and **unsurpassed in quality by any potato in the world** when cooked in any form. It is **earlier** than **Early Ohio** or **Ohio Junior**, **doubly as productive** and **never grows hollow**. The tubers in ordinary seasons attain a large size, are well formed, with few eyes which are full and quite even with the surface, color light pink or flesh.

The past season, a field of Early Pride grown by L. D. Welch of Pittsford, N. Y. was thoroughly ripened and ready to harvest in seventy days from the time of planting. Per lb. 40c.; 4 lbs. \$1.25; peck 75 cents; bushel, \$2.00; barrel, \$5.00.

STANDARD VARIETIES.

EXTRA EARLY.

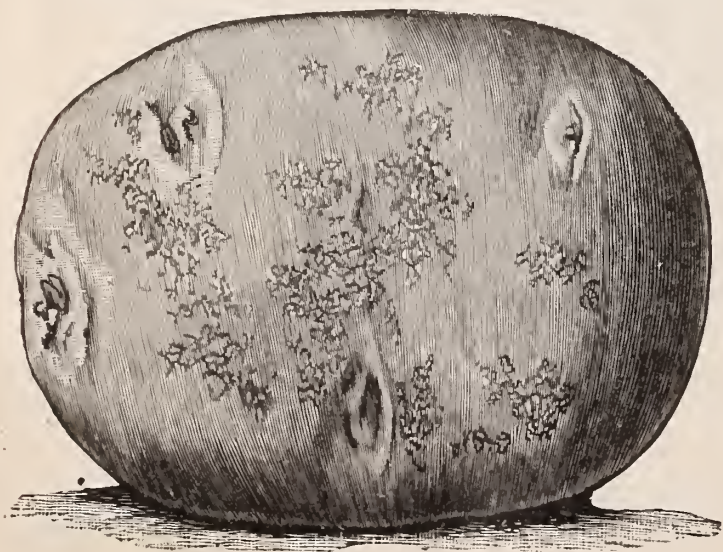
Ohio Junior.



This new potato originated in the year 1881, and although a chance seedling, it is without doubt related to that good old sort, the Early Ohio, as it is almost identical with that variety in the form and marking of the tubers, habits of growth, etc. The tubers are oval oblong, round at the seed end, with full eyes that are almost even with the surface. It is an excellent keeper, very productive, of fine quality, and has proven to be a most valuable addition to our list of **extra early** varieties. Per lb. 30c.; 4 lbs. \$1.00; peck 75c.; bushel \$1.75; barrel \$4.00.

Irish Cobbler. (*New.*)

ORIGINATOR'S DESCRIPTION: "An Irish shoemaker was found to have a variety, not offered by seedsmen, producing plump, handsome potatoes of good size and excellent quality, when the extra early sorts gardeners had were yet too small for market. Tubers beautiful creamy white, skin netted, which indicates superior quality. Each tuber is distinctly marked with small white specks peculiar to that very earliest class comprising Ohio Junior, Early Market and Early Ohio. Eyes strong and well developed, flesh white. A neighbor who has grown it says: 'Any one of our customers who grow potatoes for early market will make no mistake in securing some of this extra early and most valuable new variety, **Irish Cobbler.**'" Per lb. 75c.; 4 lbs. \$1.50; peck \$1.50; bushel \$4.00; barrel \$10.00.



Freeman.

A very popular variety of the Snowflake type. The following is the description given by the originator: "The tuber is oval in shape, russet in color, flesh very white, both raw and when cooked; very fine grain, and of very best flavor. The greatest merits of the variety are its extreme earliness and long keeping qualities. From the time they are as large as hen's eggs until the new potatoes come in next year, they burst open when boiled with the jackets on, and appear snow-white and floury." Per lb. 30c.; 4 lbs. \$1.00; peck 75c.; bushel \$1.75; barrel \$4.00.

EARLY VARIETIES.

Early Puritan.

This is one of the most valuable early varieties on account of its productiveness and large size. It is entirely distinct from all other early sorts; the tubers are quite long and nearly pure white—a very desirable feature when desired for marketing. The flesh is white, cooks dry and floury, and is equal in quality to that of the Snowflake, than with which there is no higher standard to compare. The chief value of Early Puritan lies in its wonderful productiveness. Planted under exactly the same conditions, it has thus far yielded nearly double that of the Early Rose and Beauty of Hebron. Per lb. 30c.; 4 lbs \$1.00; peck 60c.; bushel \$1.50; barrel \$3.50.



Chicago Market.

One of the best potatoes in cultivation either for family use or market. The tubers are large and uniform in size, grow compactly in the hill, eyes shallow and few in number. Flesh dry and well flavored. It is wonderfully productive, and succeeds well in all soils, so far as known. The skin is light flesh color, but partially covered with a russet coating; flesh white. Per lb. 30c.; 4 lbs. \$1.00; peck 60c.; bushel \$1.50; barrel \$3.50.



Everitt.

The superior merits of this variety are now fully established, and we thoroughly recommend it as the best and most productive of the Rose class. The tubers are very large and uniform in size, grow compactly in the hill, with few eyes, which are mostly flush with the surface, skin slightly russeted. The table qualities are excellent, cooking through evenly and quickly; flesh dry and mealy either baked or boiled; an excellent keeper that retains its good qualities all through the season. Per lb. 30c.; 4 lbs. \$1.00; peck 60c.; bushel \$1.25; barrel \$3.00.

New Queen.

A very popular variety; resembles Early Hebron in color and form, and seems to do exceeding well in any soil. Under ordinary cultivation this splendid variety will produce a large crop of handsome tubers, which always sell at an advanced price in the market on account of their superior quality. Per lb. 30c.; 4 lbs. \$1.00; peck 60c.; bushel \$1.50; barrel \$3.00.

Polaris.

This new early white potato has become very popular because of its color, earliness and productiveness. It ripens about the same time as Early Puritan, is fully as productive, while the tubers are of a much better color, being as white as Burbank or White Star, and of splendid quality. Per lb. 30c.; 4 lbs. \$1.00; peck 60c.; bushel \$1.50; barrel \$3.00.

SECOND EARLY.

Brownell's Winner.

A splendid variety of the Rose type, which has rapidly grown in popular favor. The vines make a strong, healthy growth, the tubers are large, oval oblong in form, smooth, handsome, and of a light pink or flesh color. Very productive and of fine quality. Per lb. 30c.; 4 lbs. \$1.00; peck 50c.; bushel \$1.25; barrel \$3.00.

Napoleon.

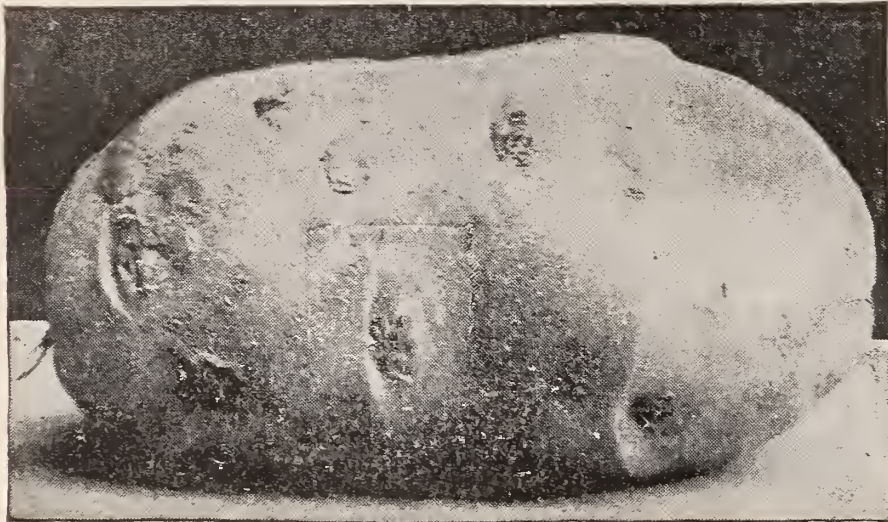
One of the best of the Rose type. Tubers very handsome, being large, long, quite smooth, and have excellent cooking and keeping qualities. This variety is a very vigorous grower and resists blight and drought to a remarkable degree. Napoleon is one of the best intermediate varieties of the Rose class. Per lb., 30c.; 4 lbs., \$1.00; peck, 60c.; bushel, \$1.50; bbl \$3.50.



BROWNELL'S WINNER.

Vick's Perfection.

This new variety is a chance seedling and is certainly one of the finest potatoes I have ever grown for general purposes. Its wonderful productiveness, fine appearance and good cooking qualities will surely make it a great favorite. The tubers grow compactly in the hill, and are large and uniform in size, oblong, inclined to oval, but generally flattened. Color white, with a tinge of pink around the eyes similar to the Hebron. The vine is of strong, vigorous growth, yet stocky and short jointed maturing about the same time as White Star. I feel confident that this variety will prove of great value for field culture and become very popular. Per lb. 30c.; 4 lbs. \$1.00; peck 50c.; bushel \$1.25; barrel \$3.00.



Green Mountain.

The wonderful productiveness, large size and splendid quality of this variety has won for it an excellent reputation. It has given the best of satisfaction wherever grown. The growth of top is strong and vigorous, branching freely, tubers white, very large and slightly flattened, with few eyes, which are quite flush with the surface, except at the seed end. Per lb. 30c.; 4 lbs. \$1.00; peck 50c.; bushel \$1.25; bbl. \$3.00.

LATE VARIETIES.

Vick's Champion.

This new potato has been selected after several years' trial as one having qualities which are highly commendable. It is a wonderfully strong growing variety, producing an abundant growth of tops, and very large, white tubers, covered with a light russeted coating. The eyes are quite large, full, and nearly even with the surface. Tubers similar in form to the Green Mountain, but more oval and full at the seed end. This is one of the most productive varieties ever offered, and a splendid keeper; of excellent quality. Per lb. 30c.; 4 lbs. \$1.00; peck 50c.; bushel \$1.25; barrel \$3.00.





Rural New Yorker No 2.

This excellent variety, although of recent introduction, has become very popular. The tubers are of the largest size, round, somewhat oblong, white, slightly flattened, and have but few eyes. A strong, vigorous grower, that will yield abundantly on ordinary soil. Per lb. 30c.; 5 lbs. \$1.00; peck 50c.; bushel \$1.25; barrel \$2.50.

Irish Daisy.

A new variety with many promising features. It is a strong grower, with deep green foliage, which stands dry weather well and shows great resistance against blight. The tubers are white, oblong in form, grow compactly in the hill, and have excellent cooking qualities. Per lb. 40c.; 4 lbs. \$1.20; peck 75c.; bushel \$2.00; barrel \$5.00.

COLLECTIONS.

I have often been asked to select varieties of potatoes for my customers which I think suitable for their particular locality, or such as would be most satisfactory for early or late planting, and often a general list is asked for. These inquiries have resulted in my offering the following collections which contain the best novelties of the season as well as some of the older standard varieties.

Each of these collections when packed will fill two barrels (Carman Collection excepted); one-half collection will fill one barrel. It will therefore be readily noticed that great inducements are offered. If there are one or more varieties contained in my catalogue a purchaser may prefer in place of one or more that are named in these collections, I will gladly allow a selection of such varieties as may be desired, in consideration that the price is the same, otherwise the difference will be allowed or must be remitted by purchaser.

CARMAN COLLECTION.

Carman No. 1, one pound, - - -	\$0 50
“ “ 2, (Rural New Yorker) one pound, -	30
“ “ 3, one pound, - - -	60

This collection by mail \$1.25, ½ coll. 70c. \$1 40

CARMAN COLL. (By Freight or Express)

Carman No. 1, Peck - - - - -	\$2 50
“ “ 2, (Rural New Yorker) peck, -	50
“ “ 3, three pounds, - - - -	1 50

Price \$4.00, or half Coll. \$2.50. \$4 50

MAGGIE MURPHY COLLECTION.

Late Varieties.

Vick's Abundance, three pounds, - - -	\$0 90
Maggie Murphy, one bushel, - - - -	1 75
American Beauty, one bushel, - - - -	1 75
American Wonder, “ “ - - - -	1 25
Rural New Yorker, “ “ - - - -	1 25
Harvest Queen, “ “ - - - -	1 75

Price \$7.00, or half Coll. \$4.00. \$8.65

EXCELSIOR COLLECTION.

Early Varieties.

Vick's Early Excelsior, three pounds, -	\$1 00
Vick's Early Pride, one bushel, - - -	2 00
Vick's Early Advancer, one bushel, - -	1 75
Early Puritan, “ “ - - - -	1 50
Polaris, “ “ - - - -	1 50
New Queen, “ “ - - - -	1 50

Price \$8.00, or half Coll. \$4.50. \$9 25

COLUMBIAN COLLECTION.

Early, Intermediate and Late Varieties.

Vick's Early Excelsior, three pounds, -	\$1 00
Vick's Abundance, “ “ - - - -	90
Carman No. 1, “ “ - - - -	1 25
“ “ 3, “ “ - - - -	1 50
Early Pride, one bushel, - - - -	2 00
New Queen, “ “ - - - -	1 50
Napoleon, “ “ - - - -	1 50
Maggie Murphy, one bushel, - - - -	1 75
American Wonder, one bushel, - - - -	1 25

Price \$10.00, or half Coll. \$5.50. \$12 65

STANDARD VARIETIES.

Early Rose, per barrel, - - - - -	\$2 75
Early Maine, “ - - - - -	2 75
Early Hebron, “ - - - - -	2 75
Holton's Rose, “ - - - - -	2 75
Burpee's Extra Early, per barrel, - -	2 75
White Star, “ - - - - -	2 50
Burbank, “ - - - - -	2 50
Peerless, “ - - - - -	2 50
Empire State “ - - - - -	2 50
Monroe Seedling, “ - - - - -	2 50
Monroe County Prize, “ - - - - -	2 50
Late Hebron, “ - - - - -	2 50

POTATO EYES BY MAIL.

This feature will prove very beneficial to those who are willing to take a little extra care at time of planting, as the purchaser will receive **three** or **four** times as much seed for the money as though they had purchased the whole tubers. They can be sent any distance with perfect safety. When the eyes arrive, if not ready to plant, cover them with moist soil and keep in a cool place.

The only extra precaution required in cultivation is the first covering, which should be a light one—just enough soil should be used so that the seed will have sufficient moisture to insure germination. These eyes will give as good results, and often better, than as though more seed had been used to the hill.

NEW VARIETIES.

Vick's Early Pride,	25c. per doz.,	\$1.00 per 100
Vick's Early Excelsior,	35c. " " "	1.50 " "
Vick's Abundance,	30c. " " "	1.25 " "
Carman No. 1,	35c. " " "	1.50 " "
Carman No. 3,	50c. " " "	3.00 " "

STANDARD VARIETIES.

50 eyes not more than two varieties,	-	\$ 50
110 " " " " four " "	-	1 00
175 " " " " six " "	-	1 50
250 " " " " ten " "	-	2 00

No order accepted for less than fifty eyes of above sorts.

GRAND PREMIUM OFFERS.

In offering the following Premiums, I feel that my customers will appreciate the effort I make in giving them an opportunity of securing **new** and **extremely valuable** varieties of potatoes **Free of Cost.**

Every grower will frankly admit that seed, especially potatoes, should be changed or renewed frequently. Some may be able to indulge in the newer and high-priced sorts, while others must content themselves with obtaining a few bushels or barrels of some of the older or standard varieties.

My **new plan of Free Distribution** places these new varieties within the reach of every grower in the land, for, by purchasing the small amount of one bushel of potatoes, he is given **Free** two pounds of any new variety in my catalogue (except as noted), with larger Premiums in proportion to the purchase.

These Premium offers may be taken advantage of and made a paying investment by a few neighbors clubbing together and forwarding their order at one time. Each barrel or package will be sent to a separate address when so desired.

PREMIUMS.

Carman No. 1 and Carman No. 3 not included in these offers.

For each bushel of potatoes ordered, the purchaser may select as Premium 2 pounds of any variety contained in my catalogue (except as noted above).

For each barrel ordered, purchasers may select 4 pounds of any variety as Premium.

Each purchaser of 3 barrels may select $\frac{1}{2}$ bushel of any variety as Premium.

Each purchaser of 5 barrels may select 1 bushel of any variety as Premium.

Each purchaser of 10 barrels may select 1 barrel of any variety as Premium.

TERMS OF SHIPMENT, Etc.

All orders will be booked in the order they are received, and filled in a like manner, as far as practicable. I shall commence shipping just as soon as danger from frost is past, and guarantee safe arrival in good condition, when shipment is left to my discretion. Two or three varieties will be packed in one barrel, when so desired, without extra cost. Prices hold good so long as my present stock lasts, no matter what advance there may be. **Special quotations for large quantities furnished on application.** Correspondence solicited. **At pound prices the postage is paid; at peck, bushel and barrel rates the purchaser will pay freight charges.**

HOW TO ORDER.

Please **be careful** to always sign your **Name, Postoffice, County and State** on every order or letter.

Cash must always accompany the order to receive attention.

Money can be sent safely either by Post Office Order, Bank Draft, Express or Reg. Letter. The expense of forwarding in either of the above ways I will pay, as the cost may be deducted from the amount of order.

Don't forget your Name, Post Office or State.

Postage Stamps accepted the same as cash; those of the two-cent denomination preferred.

At pound prices the charges are prepaid.

Two or three varieties packed in one barrel without extra charge.

One bushel in two varieties at bushel rates.

The freight charges on one peck are the same as one bushel.

My barrels hold $2\frac{3}{4}$ bushels, good measure.

I guarantee safe arrival when shipment is left to my discretion.

Order early. Don't wait until it is nearly time to plant.

FREIGHT RATES.

The following are the present freight rates to some of the principal cities, therefore this schedule will convey nearly an accurate idea of the cost of freight charges. All stations within a radius of 25 to 50 miles generally take the same rate.

No package will be transferred by a Railroad Company for less than 25c. The charges on one peck or bushel of potatoes will, therefore, be this amount, when a lower rate is given.

Figure the charges on one barrel as weighing 200 lbs.

	PER 100 LBS.		PER 100 LBS.
Albany, N. Y., - - -	15 $\frac{1}{2}$ cents.	Grand Rapids, Mich., - - -	24 cents.
Baltimore, Md., - - -	18 "	Indianapolis, Ind., - - -	23 "
Buffalo, N. Y., - - -	10 "	Jersey City, N. J., - - -	18 "
Boston, Mass., - - -	20 $\frac{1}{2}$ "	Louisville, Ky., - - -	25 "
Cincinnati, O., - - -	21 "	Pittsburg, Pa., - - -	14 "
Chicago, Ill., - - -	25 "	Philadelphia, Pa., - - -	18 "
Dubuque, Iowa, - - -	34 "	Trenton, N. J., - - -	18 "
East St. Louis, Ill., - - -	29 "	Wheeling, W. Va., - - -	